

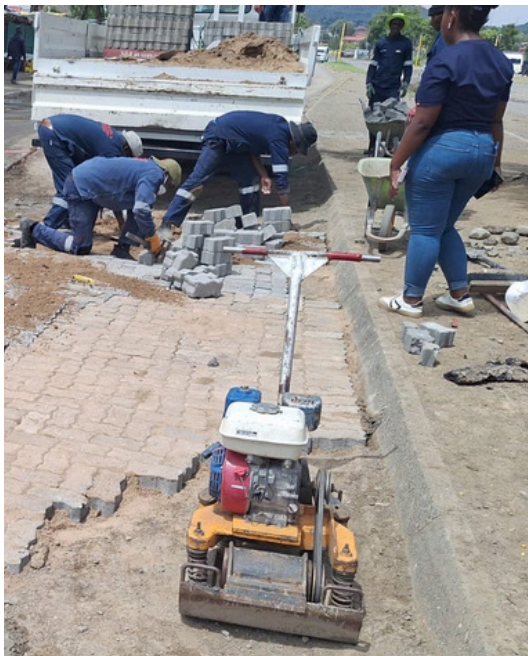
SUCCESS STORY:

Botshabelo Industrial Park: Tenants Safeguard Access and Economic Activity

When infrastructure challenges threaten economic activity, leadership sometimes emerges from within the very business community that depends on it. This has recently been demonstrated at the Botshabelo Industrial Park, where tenants took decisive action to address a severely deteriorated entrance road.

The condition of the entrance had worsened to the point where it began to disrupt daily business operations. The movement of delivery trucks, employees, and customers was significantly affected, placing productivity and operational continuity at risk. Left unattended, the situation had the potential to negatively impact business performance and investor confidence within the precinct.

Recognising the urgency of the matter, tenants mobilised their own equipment, labour, and materials to rehabilitate the damaged section of the road. Their proactive intervention restored accessibility, improved safety, and ensured that business activities could continue without prolonged disruption.



For businesses operating within the industrial park, this intervention was critical. Reliable access is essential for the movement of goods and services, and the restoration of the entrance has helped maintain operational efficiency and stability within the area.

Beyond the immediate impact, this initiative highlights the resilience and collective responsibility of tenants within the Botshabelo Industrial Park. Their willingness to act not only protected infrastructure, but also safeguarded livelihoods and reinforced confidence in the local economic environment.

While this tenant-led effort delivered meaningful and immediate results, it also underscores the importance of sustainable, long-term infrastructure maintenance. Continued collaboration between tenants and relevant stakeholders will be essential to ensure durable solutions that support ongoing economic growth.

This intervention serves as a strong reminder that infrastructure remains the backbone of economic development. When maintained, it enables growth and opportunity; when neglected, it places both at risk. The actions taken by tenants in Botshabelo reflect a shared commitment to sustaining economic activity and protecting the value of their business environment